



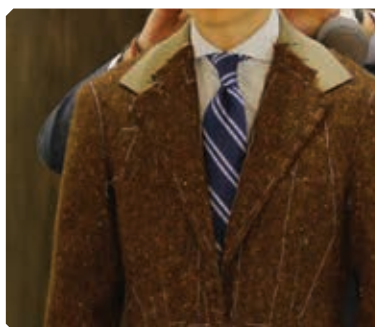
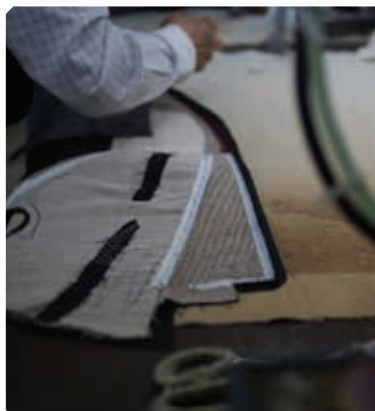
# Global Tailors

Hong Kong is well known internationally for quality custom-tailored suits and shirts. But where to start? Christine Zhou, Hong Kong resident and personal stylist ([christinezhou.com](http://christinezhou.com)), introduces the finest in the city.

## W.W. CHAN & SONS

W.W. Chan & Sons' founder Mr. Chan – who graduated from the Shanghai Cutting and Tailoring College with first-class honours in 1943 – has maintained the age-old traditions of fine craftsmanship and customer service.

Melding elements of English tailoring with the intricate handiwork of Chinese embroidery to preserve 'the essence of uniqueness and quality', each client's paper pattern is kept on record, and any changes can be updated accurately.  
[wwchan.com](http://wwchan.com)







## ASCOT CHANG

**"My customers select their own style. I give the style substance." – Ascot Chang**

In 1949, Ascot Chang moved from Shanghai to Hong Kong and, with just US\$10, started his custom-made shirt business. His first branch, in The Peninsula Hotel, has been open for over 50 years.

"We keep customers' sketches for at least 10 years. All our shirts are cut individually, so that we can make sure the fabric pattern matches from yoke to sleeve as well as at the sleeve plackets," Mr. Chan, the Manufacture Manager, says. If you are looking for a clean and comfortable fit, visit Ascot Chang. [ascotchong.com](http://ascotchong.com)

## BONHAM STRAND

A genuine bespoke social enterprise, Bonham Strand guarantees that all products are 100% crafted in Hong Kong. Their master tailors, with an average of 30 years' experience, have turned their focus to 'Italian style', providing more of a slim cut to meet their customers' needs. Their sales and fashion consultant Ryan Ng says, "We combine Hong Kong's craftsmanship with a social mission, to bring our customers attire made with skill, warmth, and heart." 21<sup>st</sup>-century luxury is also about social responsibility. To give your suit a second life, visit Bonham Strand for alterations, or to donate, upgrade or to recycle. [bonhamstrand.hk](http://bonhamstrand.hk)

## A-MAN HING CHEONG

A-Man Hing Cheong's bespoke tailoring business and only outlet, in the Mandarin Oriental Hotel Hong Kong, has been in service for over 100 years. Specialising in classic English-style bespoke suits and shirts, A-Man Hing Cheong maintains traditional tailoring craftsmanship – real buttonholes on the sleeves, bone not plastic buttons – and focuses on the fabric quality. A suit will cost upwards of US\$1,300. M/F, Mandarin Oriental Hotel, 5 Connaught Rd, Central ☒



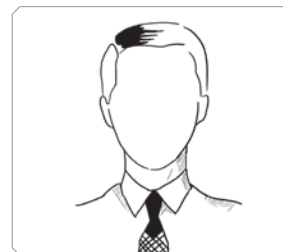
Spread collars counter-balance a narrow face



Medium to long straight-point collars will narrow a wide countenance



Long necklines require higher-sitting collars



Small collars make a large head appear larger

### SARTORIAL TIPS FROM GURU ALAN FLUSSER

If your shirt sleeves and cuffs fit correctly, you should be able to extend your arm in any direction without the cuff pulling away from the wrist. The lettering style on shirt monograms should be simple and small, no larger than ¼-inch high. For the correct jacket length in relation to your torso: divide the distance from the collar's seam to the floor in half. If you are very tall, go for lower-sitting lapels which can play down your height. The choice of a dress shirt should be guided first and foremost by the appropriateness of its collar shape to your face. Think of the face as a picture, and the collar as its frame.